

# **BAKER BOAT WORKS**

**29 Drift Road, Westport, MA 02790**

**508- 636-3272**

## **Dinghys**

### **Price List and order information**

---

<b>PUDDLEDUCK - Plan 56.</b>	<b>\$40.00</b>
<b>GOSLING - Plan 22.</b>	<b>\$38.00</b>
<b>TERN - Plan 23.</b>	<b>\$36.00</b>
<b>YACHT'S DINGHY " SWALLOW "- Plan 91</b>	<b>\$32.00</b>
<b>NORTH SHORE DINGHY - Plan 1.</b>	<b>\$41.00</b>
<b>SAKONNET RIVER BOAT - Plan 52.</b>	<b>\$40.00</b>

**. Postage and handling - USA - \$2.00.**

**Postage and handling - Canada or Overseas, please add \$10.00.**

**No Credit Cards please.**

**Send check (US dollars only) to:**

**Anne W. Baker**

**29 Drift Road**

**Westport, MA 02790.**

**Questions: Contact: [awb02@sprynet.com](mailto:awb02@sprynet.com)**

CONDITION OF SALES: All plans are sold as black-line copies for the building of ONE boat only. If it is desired to build further boats, written authorization must be obtained from Baker Boat Works . All numbered plans are printed from original belonging to the Estate of Robert H. Baker, with whom the Copyright is vested. No duplications, printing of publication of any sort is permitted without prior written consent.

## PUDDLEDUCK Plan No. 56

LOA: 7' 10 1/4"

BEAM: 4' 0"

DRAFT: 0' 7"

Designed by  
R.H. BAKER, 1951

### PLANS INCLUDE:

Lines, Offsets, Sail Plan,  
Construction, Sparring  
and Perspective -  
(one view)

DIFFICULTY LEVEL:  
Easy



One of the true all-around dinghies, PUDDLEDUCK is good for sailing, rowing or as a deckable tender. The plywood pram was originally designed as a boat for students at St. George's School, Newport, to build, sail and race. Because of a V-bottom with more than the usual deadrise, sheer and rocker, PUDDLEDUCK is dry and a good, responsive sailer for two children or one adult. (For rowing, she will carry four adults.) PUDDLEDUCK has a sliding gunter rig with spars short enough to stow inside the boat. She's also easy to transport; in fact, many people remember Bob carrying these little boats to regattas on his old firetruck.

*"Just something I decided to play with one morning and I worked out a set of lines for her and . . . oh heck, let's build the little stinker."*

RHB

## GOSLING Plan No. 22

LOA: 9'6"

BEAM: 4'3"

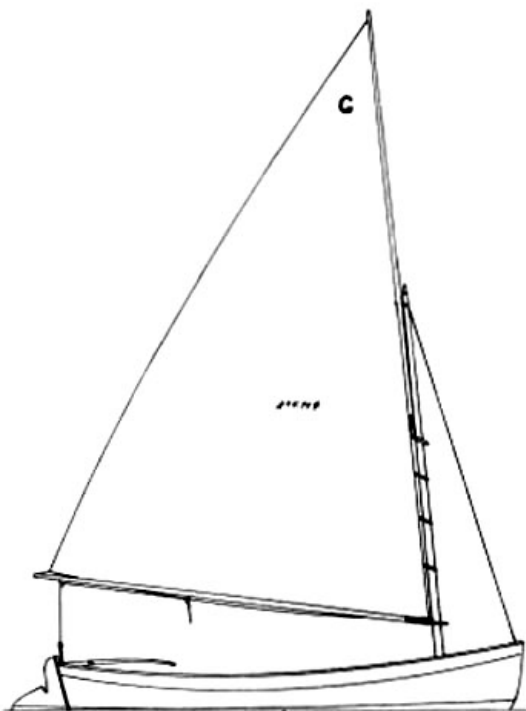
DRAFT: 0'7"

Designed by  
R.H. BAKER, 1956

### PLANS INCLUDE:

Lines, Offsets, Sail Plan,  
Construction

DIFFICULTY LEVEL:  
Basic Intermediate



This fast, round-bilged yacht dinghy has a single 45 square foot, loose-footed gunter sail and is ideal for creeping about small inlets or just generally "messaging about" in. She's also a good class boat or tender and will carry three children or two adults. Bob designed GOSLING to be Ashcroft (cold moulded) constructed, but he felt she would be ideal for fiberglass also.

*"Someday I'll build the thing again because I do like the boat."*

RHB

## **TERN** Plan No. 23

LOA: 10'0"  
BEAM: 4'7½"

Designed by  
R.H. BAKER, 1958

PLANS INCLUDE:  
Lines, Offsets, Sail Plan,  
Construction Detail  
- Plywood

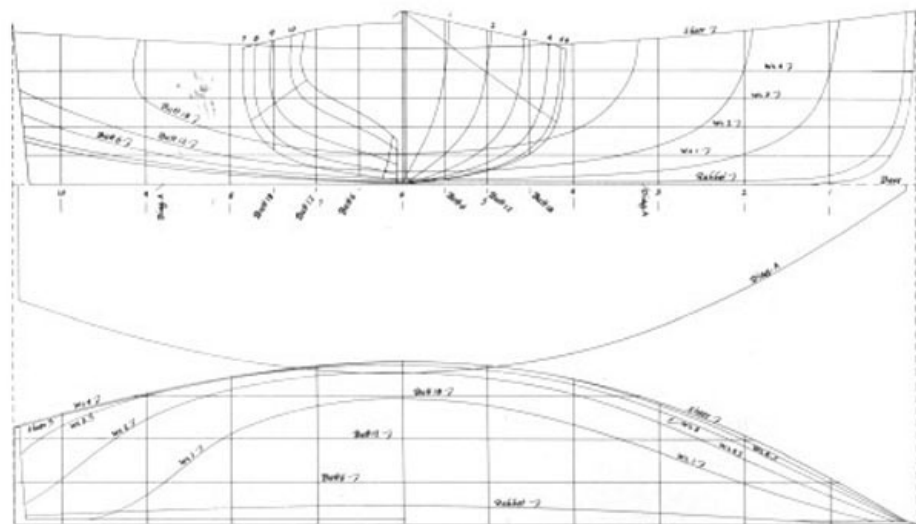
DIFFICULTY LEVEL:  
Easy



The sloop TERN is a safe, simple hard-chine dinghy, conceived as a modification to GOSLING (Plan #22) but with easier construction and more load-carrying ability. She has a jib-headed rig (64 square feet) and could carry a spinnaker. TERN will hold three children or two adults, and could be built in fiberglass or plywood.

*"All my life, I've been designing these same damn little boats and I don't know why."*

RHB



## Yacht's Dinghy SWALLOW — Plan No. 91

LOA: 10'7"      BEAM: 3'9¾"  
 Attributed to: HERRESHOFF, 1920  
 Lines Taken by: R.H. BAKER, 1968  
 PLANS INCLUDE: Lines, Offsets  
 DIFFICULTY LEVEL: Intermediate

This light, smooth-planked yacht dinghy rows well and is easy to tow. A good size for hoisting on board, she carries two adults or three children. She is attributed to Herreshoff, and details such as her moulded rail are typical of his work.



## North Shore Dinghy — Plan No. 1

LOA: 11'0"      BEAM: 4'9 $\frac{3}{4}$ "

DRAFT: 7"

Designed by: R.H. BAKER, 1963

PLANS INCLUDE: Lines, Offsets, 2 Sail Plans,  
Construction

DIFFICULTY LEVEL: Intermediate

This able little clinker-built dinghy is a pleasure to handle under sail or oars. She is round-bilged, with an offset centerboard, which simplifies the building process or she can be built as a rowing boat, with no centerboard. For sailing, choose the North Shore's gaff rig or the gunter (easier to rig, unrig and transport). The North Shore Dinghy will carry 3 adults.

*The North Shore Dinghy, named NELLIE, was featured in a WoodenBoat (# 1) article. Builder Bill Page calls her "the one boat in which I would change absolutely nothing if I were to build her again, and would not part with her at any price. Bob did an absolutely outstanding job when designing her."*