

BAKER BOAT WORKS

PO Box N12, Westport, MA 02790

RHBakerCatalog@gmail.com

Yawl Boats and a Launch

YAWL BOAT - Plan 77	\$37.00
GRAY BOAT - Plan 85	\$40.00
LAUNCH - Plan 107	\$41.00

Postage and handling - USA - \$2.00 (folded)

Postage and handling - Canada or Overseas, please add \$10.00 (folded)

No Credit Cards please.

Send check (US dollars only) to:

RH Baker Catalog

PO Box N12

Westport, MA 02790.

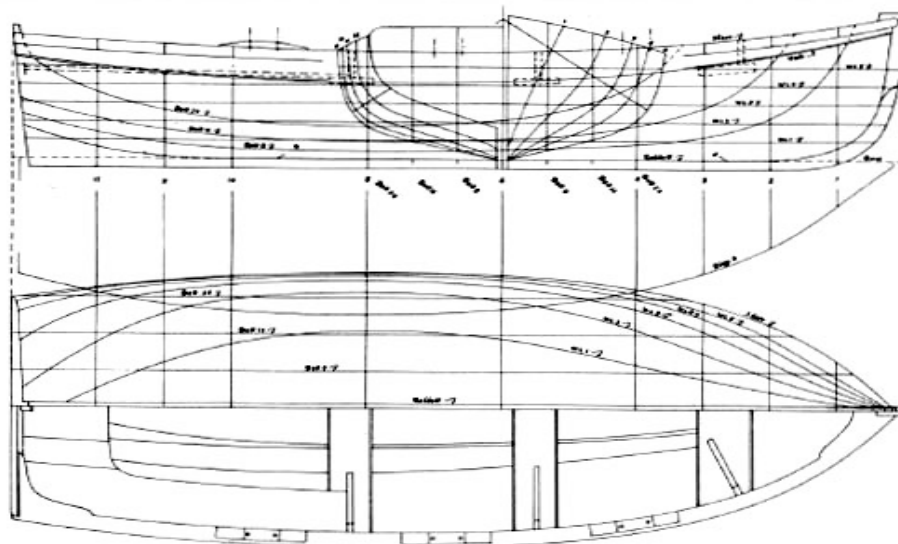
Questions: Contact: RHBakerCatalog@gmail.com

CONDITION OF SALES: All plans are sold as black-line copies for the building of ONE boat only.

If it is desired to build further boats, written authorization must be obtained from Baker Boat Works.

All plans are printed from original belonging to the Estate of Robert H. Baker, with whom the Copyright is vested.

No duplications, printing or publication of any sort is permitted without prior written consent.



Yawl Boat #16 — Plan No. 77

LOA: 13'3" BEAM: 4'10³/₄"

Lines Taken by: R.H. BAKER, 1963

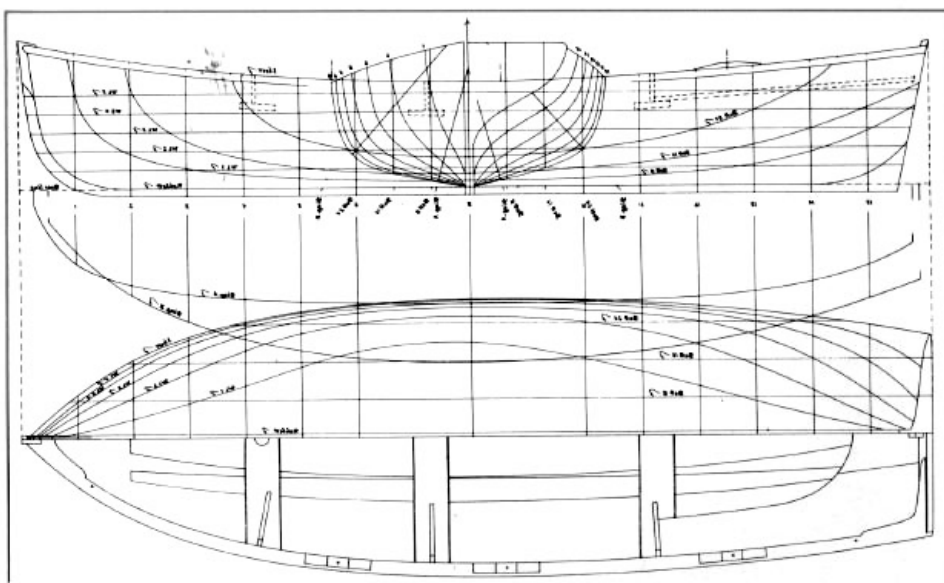
PLANS INCLUDE: Lines, Offsets

DIFFICULTY LEVEL: Intermediate to Advanced

Bob found the original of this smooth-planked yawl boat, along with a number of other boats, in an abandoned boat shop in Inverness, California. She is heavily built, but rows nicely once underway. She has two rowing stations and would make a good tender. Originally, these boats were designed and built by Beetle from New Bedford, Massachusetts for use as yawls for the scow schooners in California.

"Bob was interested in any existing old boat. Not for comparison with a modern boat form but the boat for what it was. What the early men thought about it and what they did with the designing of the boats."

Pete Baker



GRAY BOAT — Plan No. 85

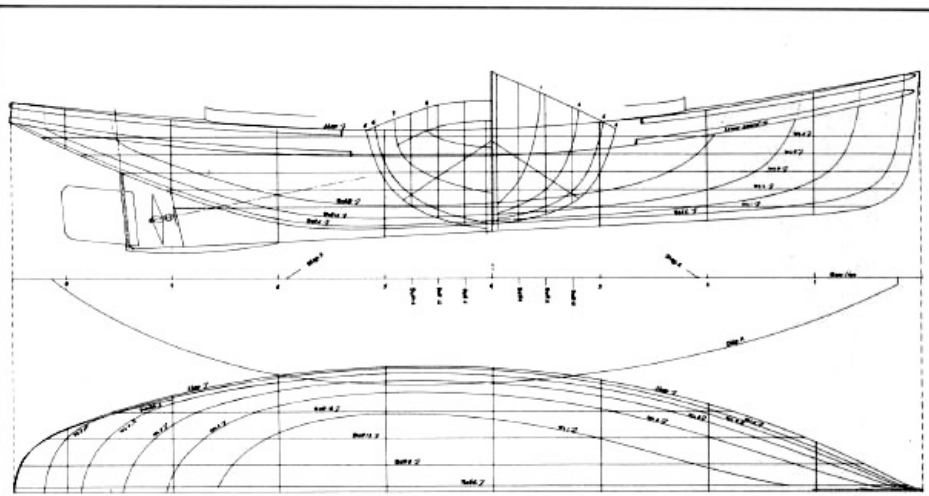
LOA: 16' 1" BEAM: 4' 10 1/4"

Lines Taken by: R.H. BAKER, 1963

PLANS INCLUDE: Lines, Offsets

DIFFICULTY LEVEL: Intermediate to Advanced

GRAY BOAT was one of the many small boats found in an abandoned boat shop in Inverness, California in 1963. It had been used as a yawl boat circa 1860 for the ferries laying the early San Francisco Bay cables. Lightly built, these smooth-planked boats were probably used as tenders. Although GRAY BOAT has a mast step, the original rig is unknown and would have to be reconstructed by Baker Boat Works.



Launch — Plan No. 107

LOA: 17'0" BEAM: 4'8½"

DRAFT: 1'6"

Lines Taken by: R.H. BAKER, 1967

PLANS INCLUDE: Lines, Offsets

DIFFICULTY LEVEL: Intermediate to Advanced

These launches were built by Palmer Brothers of Connecticut as stock boats ranging from 17' to 25' or so and were a vehicle to fit their single cylinder engine into. The boats were designed to meet the demand for a small seaworthy family launch or work boat. She has good freeboard, seats eight people comfortably with room for more. A steady boat in rough water, she can easily be handled by one person.

